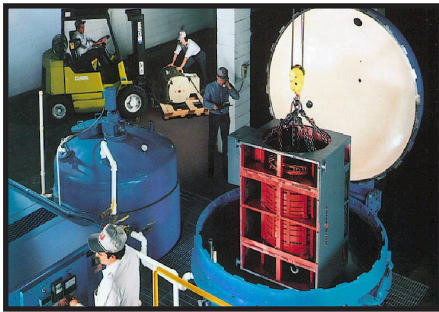




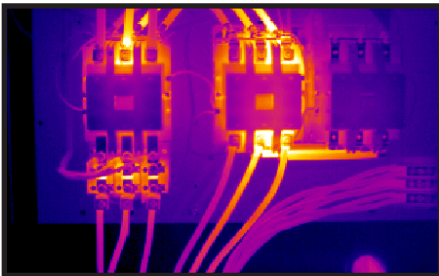
ALBANY * BINGHAMTON * BUFFALO * ROCHESTER * SYRACUSE

MOTOR REPAIR SHOPS



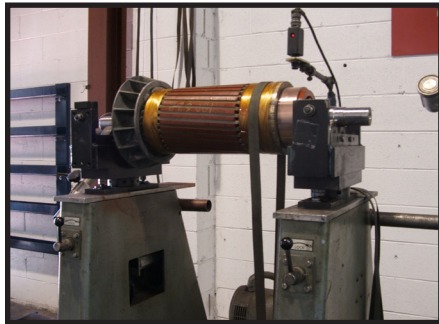
Rewind Services:

- Rewind to inverter duty specifications
- Fractionals & Integral Motors up to 5,000 HP
- Vacuum Pressure Impregnation (8' Diameter Tank)
- EASA Winding Redesign Computer Programs
- UL Certified for Hazardous Locations



Field Services:

- Laser Alignment
- Full Spectrum Vibration Analysis
- Thermographic Analysis
- Drive Installation & Start-Up
- Dynamic Balancing
- Shaft Voltage Testing



Testing Services:

- Computerized Core Loss Testing 25 KV
- Dynamometer Load Tester to 600 HP
- Hypotronics/Test Panel AC/DC Test Panel 0-2300 volts AC, 500 volts DC
- IRD Balancing up to 15,000 pounds
- Computerized 15 KV Surge Testing



Machine Services:

- Crane- 25 Ton Capacity
- Laser Alignment Equipment
- Large Horizontal Mill
- Lathes-70 inch Large Swing Engine
- Milling Machines-Vertical
- Motor Modifications
- Motor Shaft Modifications
- Press-300 Ton Horizontal
- Welding-Mig, Tig, Stick

PREVENTATIVE MAINTENANCE VIA THERMOGRAPHY:

Electrical Motors-

Detect deteriorating insulation, poor windings, bad bearings, iron core loss, & EL CID capabilities, worn brushes, armature conditions, alignment & lubrications

Fluid Transfer Systems-
Evaluate pumps, steam traps, heat exchangers, cooling towers, airconditioning systems, & steam lines

Refractory Evaluation-
Evaluate furnaces, boilers & heated tanks for more efficient operations.

Electrical Distribution-
Detect loose connections, load imbalance corrosion, & poor relay contact points.

Authorized Warranty For:

General Electric
A.O. Smith
Bodine
LaFert
Lincoln
Marathon
Siemens
U.S. Motors
Teco-Westinghouse

24/7 Emergency Service Repair Shops

CORPORATE HEADQUARTERS:

SYRACUSE: 5894 E. MOLLOY RD., SYRACUSE, NY 13211

PH: (315) 454-5535 FAX: (315) 454-5564 admin@kjelectric.com www.kjelectric.com

ALBANY
(518) 783-7152
12 ARROWHEAD LANE
COHOES, NY 12047
FAX: (518) 783-7378
albany@kjelectric.com

BINGHAMTON
(607) 772-1760
119 CORPORATE DR.
BINGHAMTON, NY 13904
FAX: (607) 772-1127
binghamton@kjelectric.com

BUFFALO
(716) 693-2500
170 FIRE TOWER RD
TONAWANDA, NY 14150
FAX: (716) 693-2544
buffalo@kjelectric.com

ROCHESTER
(585) 426-3900
54 PIXLEY IND. PKWY EXT
ROCHESTER, NY 14624
FAX: (585) 426-0739
rochester@kjelectric.com