



Motor Purge Controller - MPC

Description

Motor Purge Control System consisting of a Motor Purge Controller - MPC and a Motor Purge Valve - MPV (outlet valve) is a unit allowing a safe operation of electric motors in a hazardous environment.

The explosion protection is ensured by means of a pressurised enclosure with leakage loss compensation.

The Motor Purge Control System monitors, controls and regulates the purging gas supply for the Ex p motor.

Any malfunctioning in the system or the purging gas supply will be reported reliably and deactivated by safely isolating the Ex p motor.



Motor Purge Valve - MPV

Motor Purge Control System – MPC

Explosion protection

Ex protection type and ambient temperature

- II 3G Ex nC [ic pz] IIC T4
- II 2G Ex e d ib mb IIC T4

without cooling:
-20 °C to +30 °C

with cooling:
-20 °C to +45 °C

approved for zone

2

Technical data MPC

Supply voltage

AC 230 V/6,5VA/50 up to 60 Hz
AC 115 V/5,6VA/50 up to 60 Hz

Voltage tolerance

± 10%

Degree of protection

IP 22 (MPC without cooling)
IP 54 (MPC with cooling)

Pressure switching levels

0-25 mbar

Leakage loss compensation

0.05 l/s to 11.5 l/s

Purge gas inlet

R1" internal thread with MPC S2
R1 1/2" internal thread with MPC S3

Purge gas outlet

R 1" internal thread

Flow rate

0 - 180 m³/h with MPC S2
0 - 450 m³/h with MPC S3

Signal lines

3 x pipe connexion 10 mm

Technical data MPV

Degree of protection

IP 44

Spark and particle barrier

integrated

Pressure relief

integrated

Connection flange

DIN2633 NW 50 PN16 (MPV 2)
DIN2633 NW 100 PN16 (MPV 3)
(See Operating Instructions for dimensions)

Signal lines

2 x pipe connections 10 mm

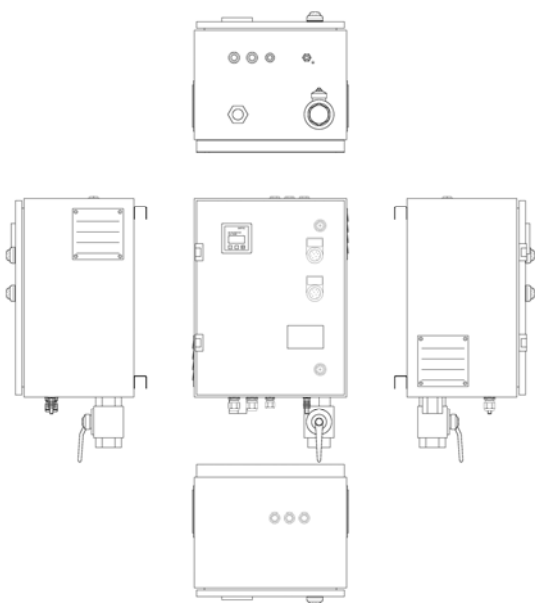
Mounting

Horizontal or vertical

A1-3711-7B0001-A.02

Dimensions

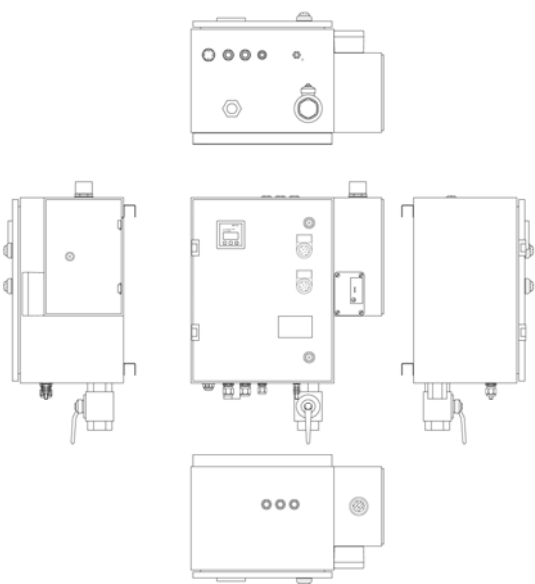
Motor Purge Control without cooling:



Width: 360 mm
Depth: 280 mm
Height: 470 mm

Dimensions

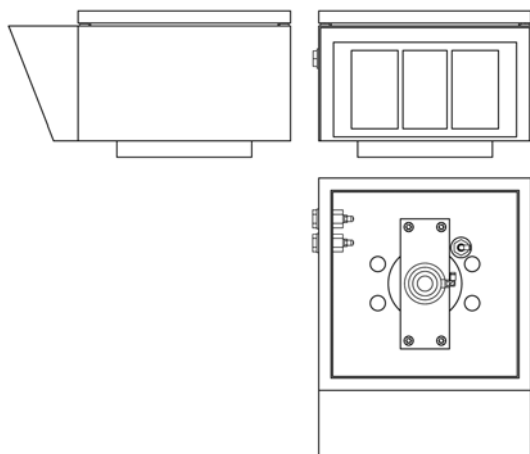
Motor Purge Control with cooling



Width: 485 mm
Depth: 280 mm
Height: 470 mm

Dimensions

Motor Purge Valve



Width: 260 mm
Depth: 160 mm
Height: 345 mm

Flange depth: 20 mm

See the Operating
 Instructions for detailed
 dimensions for the
 flanged connection.

Order data

MPC - S2
 without cooling;
 including the associated MPV 2

Order no.: A7-3711-6110/. M20

MPC - S2k
 with cooling;
 including the associated MPV 2

Order no.: A7-3711-6110/. M25

MPC - S3
 without cooling;
 including the associated MPV 3

Order no.: A7-3711-6110/. M30

MPC - S3k
 with cooling;
 including the associated MPV 3

Order no.: A7-3711-6110/. M35

**Add the voltage range code
 number to the order number:**

1 = AC 230 V**2 = AC 115 V**