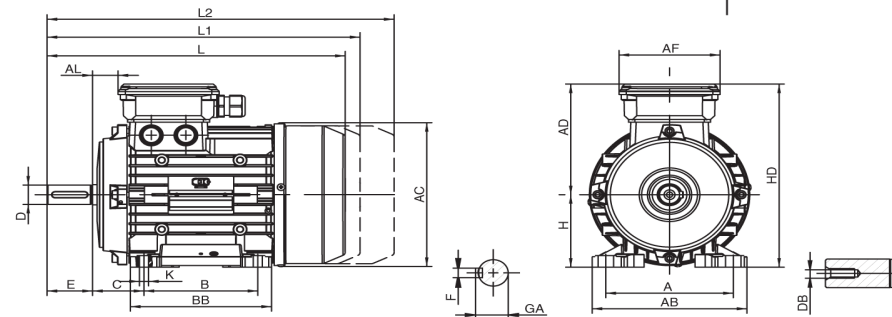


IEC MOUNTING DIMENSIONS

Foot-Mounted AC and DC Machines

UL/CSA RATINGS								IEC RATINGS						
UL General Purpose Amp Rating	1-Phase hp Ratings			3-Phase hp Ratings				AC-3 I _e (A)	AC-1 (40 °C) i _e = i _{th} (A)	Maximum kW Ratings AC-3				
	115V	200V	230V	200V	230V	460V	575V			3-Phase Motors 50-6- Hz				
										220V/230V	380V/400V	415V	660V/690V	
20	1/4	3/4	1	1-1/2	2	3	5	7	22	2.2	3	4	3.5	
20	1/2	1	1-1/2	3	3	5	7-1/2	9	22	2.5	4	5.5	4.5	
20	1	2	2	3	3	10	10	12	22	3.5	5.5	7	6.5	
20	1	2	3	5	5	10	10	15.5	22	4	7.5	8	7	
40	2	2	3	5	5	10	15	18	40	5	7.5	10	11	
40	2	3	5	7-1/2	10	15	20	25	45	7.5	11	14.5	14	
40	3	5	5	10	10	20	25	32	45	10	15	18	17	
63	3	5	7-1/2	10	15	30	40	40	60	12.5	18.5	24	23	
80	3	7-1/2	10	15	20	40	50	50	80	15.5	22	30	30	
88	5	10	15	20	25	50	60	65	98	20	30	39	35	
88	5	10	15	20	25	50	60	72	98	22	37	41	35	
125	7-1/2	15	15	25	30	60	75	80	110	25	37	48	63	
125	7-1/2	15	15	25	40	75	100	95	130	30	45	57	75	
160	10	25	25	40	50	100	100	115	160	37	55	70	90	
180	10	25	30	40	60	125	125	150	190	48	75	91	96	
225	10	25	30	40	60	125	125	170	275	52	90	100	96	

UL/CSA RATINGS					IEC RATINGS						
UL General Purpose AMP Rating	3-Phase hp Ratings				AC-3 I _e (A)	AC-1 (40 °C) i _e = i _{th} (A)	Maximum kW Ratings AC-3				
	200V	230V	460V	575V			3-PHASE MOTORS 50-60 Hz				
							220/230V	380/400V	415V	660/690V	1000V
225	50	60	125	150	185	337	55	90	110	175	108
250	60	75	150	200	225	386	70	110	132	215	108
300	75	100	200	250	250	429	75	132	148	240	108
225	50	60	125	150	185	337	55	90	110	175	108
250	60	75	150	200	225	386	70	110	132	215	108
300	75	100	200	250	250	429	75	132	148	240	108
350	100	125	250	300	300	490	90	160	180	286	132
450	125	150	300	400	400	612	125	200	240	344	132
550	150	200	400	500	500	857	155	250	300	344	132
550	150	200	400	500	580	980	155	315	350	344	132
630	200	200	400	600	580	980	185	315	348	560	600
700	200	250	500	600	650	1041	205	355	390	630	600
800	250	300	600	700	750	1102	240	400	455	720	800
850	290	350	700	860	820	1225	260	450	500	750	800
1100	350	420	850	980	1000	1225	315	560	610	1000	1000
1400	---	---	---	---	---	1714	---	---	---	---	---
1600	560	640	1200	1300	1600	2200	500	900	900	1600	1700
2000	---	---	---	---	---	2450	---	---	---	---	---



Frame Number	H	A	E	C	K	Bolt or Screw
56M	56	90	71	36	5.8	M5
63M	63	100	80	40	7	M6
71M	71	112	90	45	7	M6
80M	70	125	100	50	10	M8
90S	90	140	100	56	10	M8
90L	90	140	125	56	10	M8
100S	100	160	112	63	12	M10
100L	100	160	140	63	12	M10
112S	112	190	114	70	12	M10
112M	112	190	140	70	12	M10
132S	132	216	140	89	12	M10
132M	132	216	178	89	12	M10
160S	160	254	178	108	14.5	M12
160M	160	254	210	108	14.5	M12
160L	160	254	254	108	14.5	M12
180S	180	279	203	121	14.5	M12
180M	180	279	241	121	14.5	M12
180L	180	279	279	121	14.5	M12
200S	200	318	228	133	18.5	M16
200M	200	318	267	133	18.5	M16
200L	200	318	305	133	18.5	M16
225S	225	356	286	149	18.5	M16
225M	225	356	311	149	18.5	M16
225L	250	406	311	168	24	M20
250M	250	406	349	168	24	M20
280S	280	457	368	190	24	M20
280M	280	457	419	190	28	M24
315S	315	508	406	216	28	M24
315M	315	508	457	216	28	M24
355S	355	610	500	254	28	M24
355M	355	610	580	254	28	M24
355L	355	610	630	254	28	M24
400S	400	686	580	280	35	M30
400M	400	686	630	280	36	M30
400L	400	686	710	280	36	M30

D FLANGE-B5

SIZE	P	N	M	T	S	D	E	F	GA	LA	AD	AF	AL	AC	DB
M56	120	80	100	2.5	7	9	20	3	10.2	8	112	93	13	115	M3
M63	140	95	115	2.5	9.5	11	23	4	12.5	10	117	93	19	123	M4
M71	160	110	130	3	9	14	30	5	16	9	125	93	24	147	M5
M80	200	130	165	3	12	19	40	6	21.5	10.5	138	111	23	165	M6
M90S	200	130	165	3	12	24	50	8	27	10.5	148	111	28	181	M8
M90L	200	130	165	3	12	24	50	8	27	10.5	148	111	28	181	M8
M100L	250	180	215	4	14.5	28	60	8	31	14	156	111	42	198	M10
M112M	250	180	215	4	14	28	60	8	31	14	159	111	43	222	M10
M132S	300	230	265	4	14	38	80	10	41	20	193	133	47	264	M12
M132M	300	230	265	4	14	38	80	10	41	20	193	133	47	264	M12
M160M	350	250	300	5	18	42	110	12	45	15	232	186	52.5	317	M16
M160L	350	250	300	5	18	42	110	12	45	15	235	186	52.5	317	M16
M180M	350	250	300	5	18.5	48	110	14	51.5	20	260	185	54	352	M16
M180L	350	250	300	5	18.5	48	110	14	51.5	20	260	185	54	352	M16

C FLANGE-B14

SIZE	P	N	M	T	S	D	E	F	GA	AD	AF	AL	AC	DB
M56	80	50	65	2.5	M5	9	20	3	10.2	112	93	13	115	M3
M63	90	60	75	2.5	M5	11	23	4	12.5	117	93	19	123	M4
M71	105	70	85	3	M6	14	30	5	16	125	93	24	147	M5
M80	120	80	100	3	M6	19	40	6	21.5	133	111	23	165	M6
M90S	140	95	115	3	M8	24	50	8	27	148	111	28	181	M8
M90L	140	95	115	3	M8	24	50	8	27	148	111	28	181	M8
M100	160	110	130	3.5	M8	28	60	8	31	156	111	42	198	M10
M112	160	110	130	3.5	M8	28	60	8	31	159	111	43	222	M10
M132S	200	130	165	4	M10	38	80	10	41	193	133	47	264	M12
M132M	200	130	165	4	M10	38	80	10	41	193	133	47	264	M12
M160M	250	180	215	5	M12	42	110	12	45	235	186	79	317	M16
M160L	250	180	215	5	M12	42	110	12	45	235	186	79	317	M16



ALBANY
518-783-7152
12 Arrowhead Lane
Cohoes, NY 12047
FAX: 518-783-7378

BINGHAMTON
607-772-1760
119 Corporate Drive
Binghamton, NY 13904
FAX: 607-772-1127

BUFFALO
716-693-2500
170 Fire Tower Rd
Tonawanda, NY 14150
FAX: 716-693-2544

ROCHESTER
585-426-3900
54 Pixley Industrial Pkwy. Ext
Rochester, NY 14624
FAX: 585-426-0739

SYRACUSE
315-454-5535
5894 E. Molloy Rd
Syracuse, NY 13211
FAX: 315-454-5564

KJ ELECTRIC ENGINEERING SERVICES
-Industrial Control
-Panel Building
-Power Studies*
-Thermography*
-Laser Alignment*
-Vibration Analysis*
-Drive Start-Ups*
-Dynamic Balancing
-Breaker Solid State
-Trip Retrofits
-Vacuum Pressure
Impregnation (VPI)
-Training*

www.kjelectric.com

24 HOUR/ 7 DAY EMERGENCY SERVICE

"Where the Customer Defines Service"

*Available as a Field Service